

**A NEW SPECIES OF HOPLOPLEURA FROM AUSTRALIA**

(ANOPLURA: HOPLOPLEURIDAE)

PHYLLIS T. JOHNSON, *Gorgas Memorial Laboratory, Panama, R. P.*

Through the kindness of Dr. Theresa Clay of British Museum (Natural History) I have had the opportunity to examine specimens of a louse collected from *Pseudomys higginsi*, which is one of the murine rodents native to Australia and adjacent islands. The specimens were collected in Tasmania by Mr. John H. Calaby, Wildlife Survey Section, Commonwealth Scientific and Industrial Research Organization, Canberra.

It gives me pleasure to dedicate the new species to Mr. Calaby, whose interest has made available to us this unusual Australian anopluran.

*Hoplopleura calabyi*, new species

*Type data*.—Holotype female, allotype male, three male and two female paratypes from *Pseudomys higginsii*, Dawson Settlement, Tasmania, 19 June 1959, J. H. Calaby collector. Holotype and allotype deposited in the Division of Entomology Museum, Commonwealth Scientific and Industrial Research Organization, Canberra, Australia. One pair of paratypes deposited in the collections of the U. S. National Museum, Washington, D. C., the remaining paratypes deposited in the collections of the British Museum (Natural History), London.

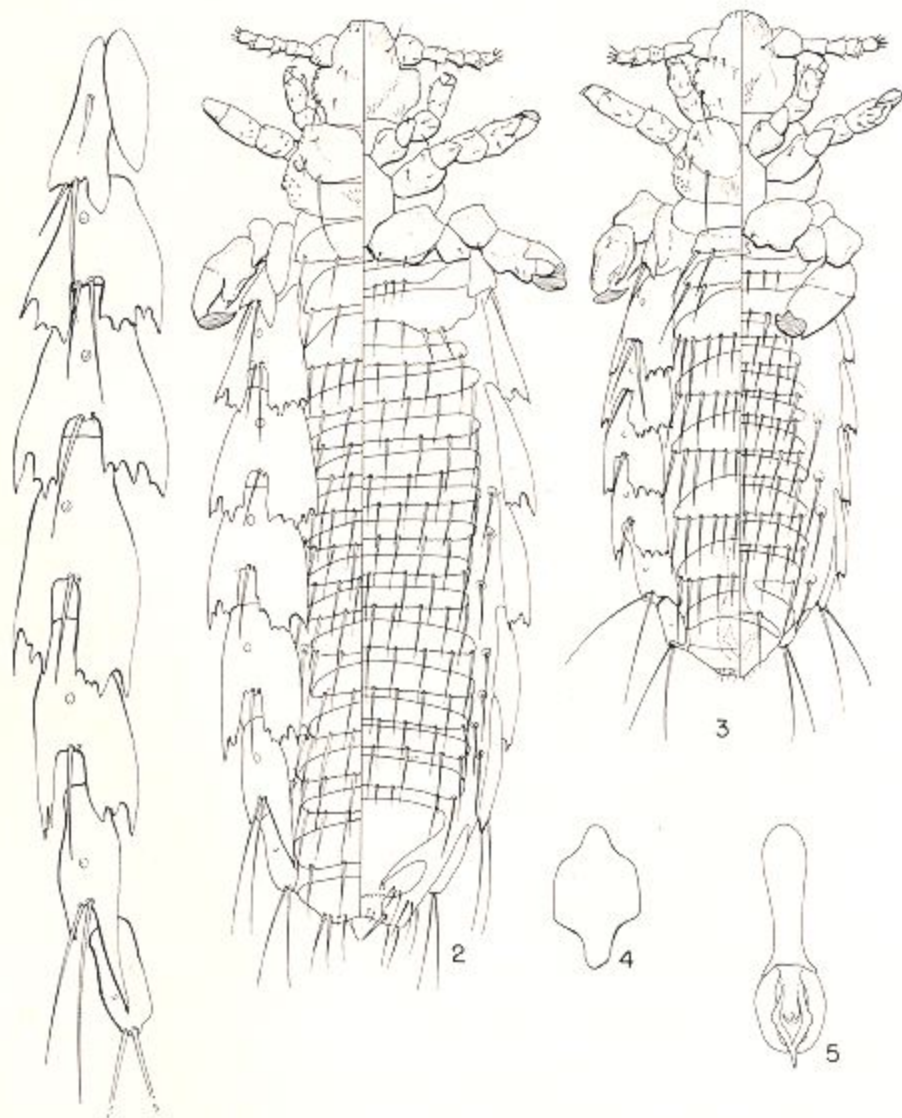
*Diagnosis*.—A member of the *hesperomydis-affinis* group of *Hoplopleura* species. Like its related species, *calabyi* has a pair of long setae on the thoracic dorsum, the majority of the paratergal plates are divided into two more-or-less truncate lobes, typical abdominal segments have three ventral plates in the female and two such plates in the male, the first ventral plate of the third abdominal segment has two enlarged setae in each of the two lateral groups, and the thoracic sternal plate is elongate. *H. calabyi* is similar to *H. apomydis* Ferris, 1921 (from *Apomys insignis*, Philippines) in that paratergal plate VII has a long dorsal apical lobe in the female and plates IV-VI normally have only one long apical seta, the second seta being minute. In both sexes, *calabyi* is easily distinguished from *apomydis* by having the two apical lobes of paratergal plates III-IV deeply scalloped and in having two long apical setae on paratergal plate III rather than only one seta in this position.

*Description*.—**FEMALE** (fig. 2): **Head**: Postantennal region almost as broad as entire head is long; lateral postantennal margins unevenly rounded and heavily sclerotized. **Thorax**: Large seta present mesad to spiracle on both sides; thorax broader than long; dorsum laterally rugose. Thoracic sternal plate (fig. 4) elongate, with anterior and posterior apices abruptly narrowed to form sharply rounded to angulate lobes. **Legs**: As in genus. **Abdomen**: Typical segments with three sternal and three tergal plates bearing on the posterior margin six to eight long, thin unmodified setae. Both dorsally and ventrally some segments have one seta occurring laterally on both sides, off the plates. Paratergal plates (fig. 1) large, plate II with two short, acute lobes and two long apical setae. Plate III with two setae which reach beyond apex of the two subequal, truncate, scalloped apical lobes. Plates IV-VI shaped as plate III but with only one long apical seta which extends to or beyond apex of lobes plus a second minute seta. One paratype female has two long setae on plate VI on one side. Plate VII with short, simple ventral apical lobe and very long dorsal lobe which is almost the length of the plate proper, and which bears the usual two long apical setae. The same paratype female mentioned above has this plate lacking the ventral lobe and with the dorsal lobe only about two-thirds the length of the plate proper. Plate VIII lacks apical lobes and bears the usual two long apical setae. **Genitalia** not diagnostic.

**MALE** (fig. 3): **Head and thorax** as in female. **Abdomen**: with one tergal plate and two sternal plates per typical segment; tergal plates bearing a posterior row of eight to twelve long slender unmodified setae, the more lateral setae being larger and heavier; sternal plates with six to eight slender setae. Ventrally,

segments 4-7 with one seta laterally off the plate. Paratergal plates as in female except plate VII has the dorsal apical lobe short. **Genitalia** (fig. 5) not diagnostic.

Lengths.—Female: 1.2-1.5 mm. Male: 1.0-1.1 mm.



*Hoplopleura calabyi*, new species. Figure 1, Paratergal plates II-VIII, female holotype; fig. 2, female holotype; fig. 3, male allotype; fig. 4, thoracic sternal plate, female holotype; fig. 5, male genitalia, paratype.